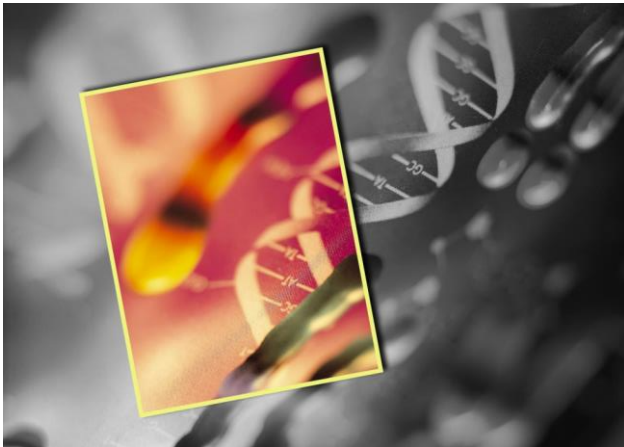


Foundations of Nanoscience:

Self-Assembled Architectures and Devices

Attendee General Information



Snowbird Cliff Lodge
Snowbird, Utah



Registration, Rooms, Transport, & Food

Conference goal:

- FNANO's purpose is bringing a wide variety of researchers together from many disciplines to inspire new avenues of research, with self-assembly as a central theme.
- *Typically*, keynote talks will emphasize variety, invited talks will emphasize advances within the community, and poster sessions are divided and kept small to maximize their visibility.

Registration:

- Registration is through Duke's [website](#) with a **March 5th deadline**
- Abstract submission is through [Easychair](#) with a **Feb. 1st deadline**

Rooms:

- There are a 200 rooms on the Snowbird's reserved block
- After the **March 20th** deadline or after all blocked rooms are reserved the rate will go from **\$165/night** to their commercial rate of **>\$350/night**

We highly recommend reserving rooms early

- The nearest other hotels are 15-30 min away
- See the [ISNSCE forum](#), if you are considering room sharing

Transport:

- The Snowbird contracts with Canyon Transport for a shuttle between the SLC airport and the hotel. This typically costs \$80, and may be reserved through the hotel

Food:

- Conference registration *typically* covers
 - Snacks & Coffee Mon., Tues., Weds., & Thurs
 - Lunch on Mon., Tues., & Weds.
 - Dinner on Tues., & Weds
- **Note:** The snowbird charges captive audience rates for food. Many attendees plan accordingly by bringing snack food etc.

Conference Schedule

General:

- The conference *typically* begins at 8:30 am MST, and continues until 6:00 pm or 8:00 pm MST
- Poster sessions:
 - All posters are presented twice, once during a midday session and once during an evening session
 - Midday poster sessions have fewer presenters, to better showcase individual work
 - All poster will be presented at least once before the award ceremony, although one midday session will occur after the ceremony

Recommendations:

- Sunday evening and Monday evening are excellent times to plan for meals with collaborators or to network.
 - We encourage attendees to use the slack channel to find others to network with
- Attendees often socialize at the Aerie bar at the end of each day
- The Snowbird hotel is at an altitude of 8,100 ft (2.5 km). *Altitude sickness is not uncommon.* Attendees are encouraged to plan in rest time, drink plenty of fluids, and use the humidifiers provided by the hotel.

Where can I eat?

In the Cliff Lodge

- First Floor (L1):
- Second Floor (L2):
- Tenth Floor (L10):

The Atrium
SeventyOne
The Aerie

- Coffee & breakfast
- American grill
- American gastropub



The Atrium

Gourmet coffees, pastries and breakfast year-round.

Level L1
Hours
7 - 11 am, Daily

SeventyOne

Snowbird's newest restaurant, SeventyOne, features American grill favorites, an open kitchen and a retro vibe.

Level L2
Hours
7 am - 10 pm, Daily

The Aerie

Modern-American gastropub cuisine. The Aerie focuses on local, seasonal and organic ingredients.

Level 10
801.933.2160
Hours
Dinner:
5 - 10 pm, Daily

The Snowbird Center (5-10 min walk)

- General Gritts (basement)
 less expensive sandwiches
- The Forklift – Breakfast & Lunch
- Tram Car Pizza



Iron Blossam Lodge (Shuttle ride or 15 min. walk)

- Wildflower – Italian restaurant