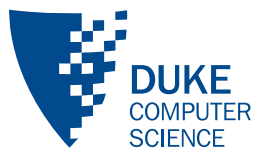


Philosophical, Social, and Ethical Issues

George Konidaris
gdk@cs.duke.edu



Spring 2015

Course Evaluation



Please complete!

- Confidential
- Anonymous
- Results available only after grades posted
- Most useful form of feedback for instructors

The Mind-Body Problem



What Are Minds Made Of?



Dualism

- Mind and body are two different things
- Mind non-physical

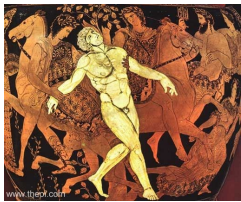
Materialism

- Only material objects exist
- Physical states are mental states
- “Brains cause minds”
- Biological naturalism vs. functionalism

AI: The Very Idea



For as long as people have made machines, they have wondered whether machines could be made intelligent.



(pictures: Wikipedia)

Core AI Hypothesis



“The brain is a computer.”

The AI Hypothesis



Weak AI Hypothesis:

- A computer program can be built that acts as intelligently as a human.
- This is about *behavior*.
- It makes no claim about *minds* or even *thought*.

Strong AI Hypothesis:

- A machine that behaves as intelligently as a human has a mind and is thinking.
- Assumes that the Weak AI hypothesis is true.
- This is a claim about *minds* and *thought*.

Turing

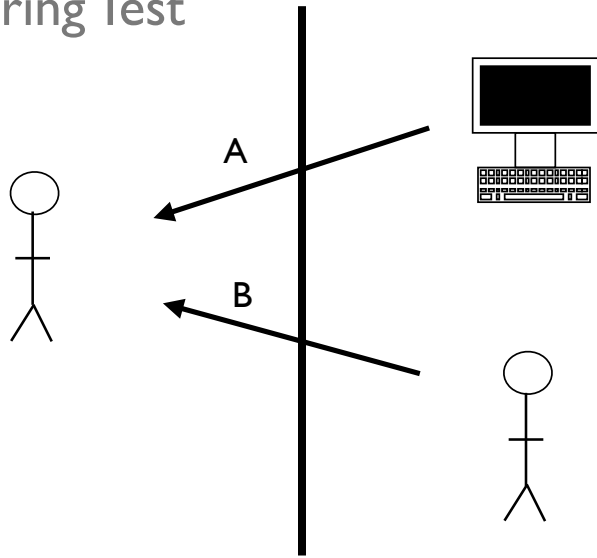


Computing machinery and intelligence. *Mind*, October 1950.

“*Can machines think?*”

(picture: Wikipedia)

Turing Test



Objections

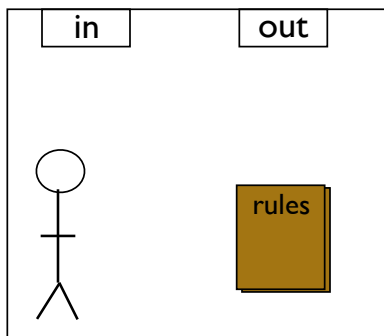


- The Theological Objection
- The Head-In-The-Sand Objection
- The Mathematical Objection
- The Argument from Consciousness
- The Argument from Various Disabilities

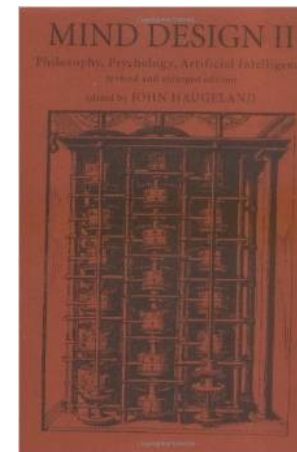
The Chinese Room



Where's the mind / understanding / consciousness?



Highly Recommended (but dated)



Social and Ethical Issues



The emergence of ever-more intelligent machines has potentially serious consequences for our world.

Job losses

Too much (or too little) leisure time

Loss of 'uniqueness'

Loss of accountability

Loss of privacy

AI systems might take over the world

